

M&M INDUSTRIES, INC.

MANUFACTURER'S NOTIFICATION FOR M & M INDUSTRIES, INC. UN/DOT PACKAGING FOR HAZARDOUS SOLIDS

General Information:

At M&M Industries, we understand your goal to safely transport your valuable products along roads and highways. You want to provide your customers with value while keeping their trust. While we are legally bound to provide you with the following information, M&M Industries also wants you to know we value your endeavor and want to help you reach your goal, everyday.

Under the **U.S. Department of Transportation's Title 49CFR** it is the **Shipper's Responsibility** to determine that the packaging or container is an authorized packaging, including all part 173 requirements. The selected packaging must be properly assembled for transportation in accordance with the manufacturer's notification. **Please do all testing and research necessary to ensure that you have selected the proper M & M Industries container for use with your product.**

To meet UN/DOT Standards, this package must be properly closed for shipment. At the time of transfer, the packaging does not meet the UN standard because it is disassembled. Only when assembled as specified in the closure instructions below, and using the components described herein, is this packaging certified to meet the UN standard. Failure to follow the closure instructions or substituting package components with components other than those identified in the following paragraph will render the UN/DOT Certification invalid.

A copy of the manufacturer's notification, including closure instructions, must be made available for inspection by a representative of the Department of Transportation upon request for at least 90 days once the package is offered to the initial carrier for transportation in commerce, as of this time (June 2013). However, M&M Industries recommends that you retain these documents for a minimum of 365 days after the package is offered for shipment. The current record retention requirements are subject to change and are found in 49CFR 173.22(a)(4), <http://www.ecfr.gov>

M&M Industries takes superb pride in our Quality Assurance program and systems. However, even with our very best efforts, fittings on covers / pails can become damaged or shift during transportation or storage after leaving our facility. M&M Industries recommends that fillers/offerors take all steps deemed necessary to check the fittings on each pail / cover, to meet your quality standards. An example of this is a screw cap on a cover that may vibrate or back off during transportation. The offeror of a hazardous material may be open to liability if they do not take the necessary precautions. Should you have any questions, please contact customer service at **(800) 331-5305**.

THESE CLOSURE INSTRUCTIONS REMAIN IN EFFECT UNTIL FURTHER NOTICE.

**CLOSURE INSTRUCTIONS FOR:
Life Latch Drum**

Identification of Packaging: This packaging type is identified by:

Size	Pail ID numbers	Matching lid ID numbers	Lid diameter (Ref only, measured at bottom of lid)
12 Gallon	12439	12440	16.29"

This packaging may or may not use a gasket and/or vent plug. If a gasket or vent plug is used it must meet the specification below for **SOLIDS**:

UN Markings for Life Latch Drums:

An appropriate UN marking must be maintained for each M&M Industries container design. The UN markings for M&M Industries Life Latch Drum containers are listed below.

Container Sizes	UN Rating (Without gasket)	UN Rating (with gasket)
12.0 Gallon	1H2/Y53/S	1H2/Y40/S

In accordance with the U.S. Department of Transportation's Title 49CFR, Section 178.2, manufacturers of U.N. Standard/DOT Specification packages are required to notify in writing each person to whom that packaging is transferred of all requirements in this part not met at the time of transfer, and with information specifying the type(s) and dimensions of the closures, including gaskets and any other components needed to ensure that the packaging is capable of successfully passing the applicable performance tests. This information must include any procedures to be followed, including closure instructions for inner packagings and receptacles, to effectively assemble and close the packaging for the purpose of preventing leakage in transportation.

Specifically, the following items pertain to the **Life Latch Drums**:

- **Life Latch Drums** are certified to the UN/DOT performance oriented packaging standards and are marked with the appropriate UN markings on the container.
- The Life Latch Drum must always be used with the correct Life Latch Drum lid in order to meet the UN/DOT performance oriented packaging standards.
- **Life Latch Drums are not UN certified for liquids.**

CLOSURE INSTRUCTIONS FOR SOLIDS:

NOTE: This container is not UN certified for liquid hazardous materials

Non-Gasketed lid:

Packaging Components required:

- Drum
- Lid (non-gasketed)

To close: Seat lid on top of drum. Rotate lid counter-clockwise until it drops down (this will help prevent cross-threading). Then, rotate lid clockwise until the raised rectangular mark on the lid (see Figure 1) is located to the left of the raised capsule-shaped marks on the left side of the drum trigger (see Figure 2). Continue rotating until the lid is fully tightened (see Figure 3). Inspect lid after application to confirm it is properly seated.

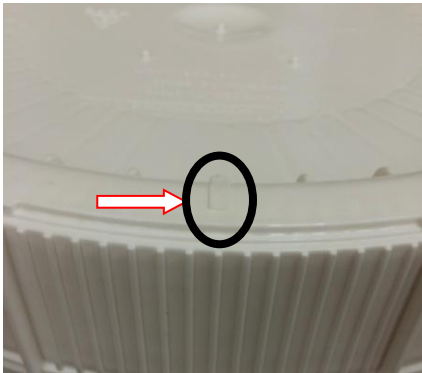


Figure 1



Figure 2

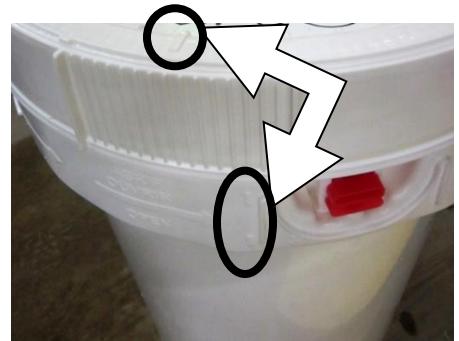


Figure 3

Gasketed Lid:

Packaging Components required:

- Drum
- Lid (gasketed)

To close: Seat lid on top of drum. Rotate lid counter-clockwise until it drops down (this will help prevent cross-threading). Then, rotate lid clockwise until the raised rectangular mark on the lid (see Figure 1) is located to the left of the raised circular mark on the right side of the drum trigger (see Figure 2). Continue rotating until the lid is fully tightened. Inspect lid after application to confirm it is properly seated.



FIGURE 1

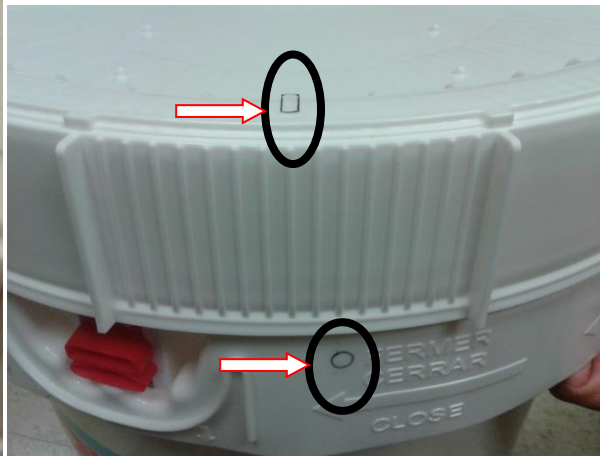


FIGURE 2